

# THE IMPORTANCE OF GEOSPATIAL INFORMATION IN THE DEVELOPMENT OF MALAYSIA

BY

SR AHAMAD BIN ZAKARIA  
DEPARTMENT OF SURVEY AND MAPPING  
KUALA LUMPUR, MALAYSIA



## Sources of Geospatial Information

Aerial Photos



Satellite Images



Various Basic Maps  
and Charts



Environmental  
Information



Field Survey



LIDAR Mapping



UAV  
Aerial Images



RADAR Images



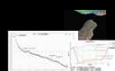
IFSAR Images



Utility Survey



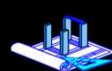
Disaster Information



Statistics Data



Various Databases



Road and River Data



Street Addresses  
and Geonames



**Our world is in continuous change**  
**More than ever before, there is a need for timely, fit-for-purpose geospatial information on the state of our world**

The central image shows a globe of Earth with various global issues listed around it:

- Climate Change
- Population
- Political & Social Conflict
- Loss of Biodiversity
- Land Tenure
- Energy & Water Security
- Natural Resources
- Economic Uncertainty
- Urbanization and Land Use
- Human Health
- Security
- Technology Advancements
- Poverty & Inequality
- Globalization

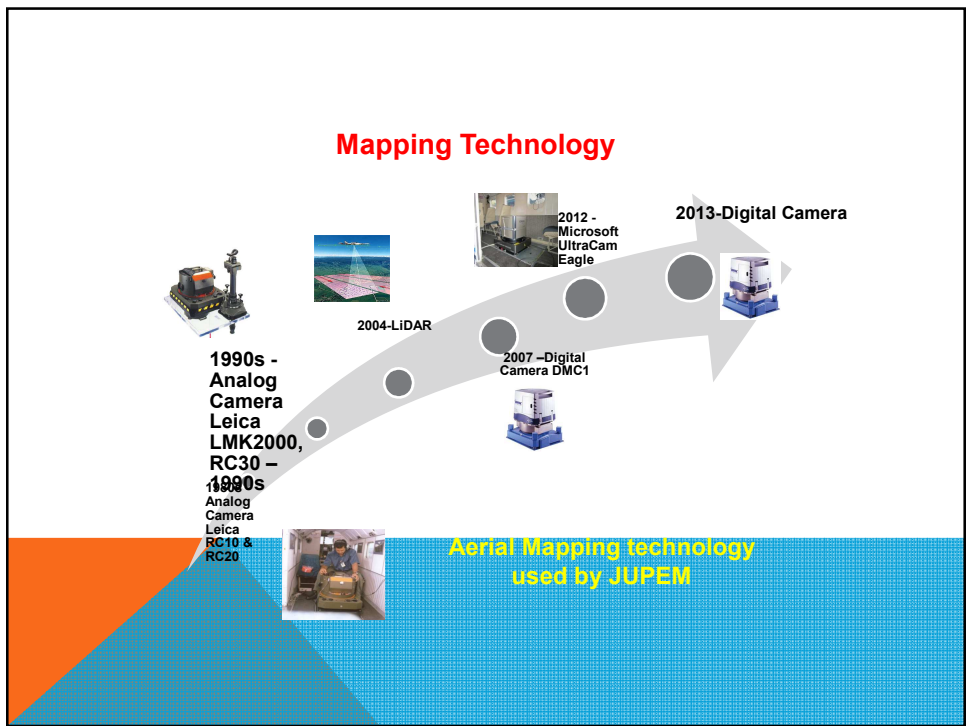
*... data, information, knowledge, understanding....decisions*

Source: European Environment Agency

**Geospatial Data and Information**

Related to a position on the surface of the Earth

Reference data	Thematic data
<ul style="list-style-type: none"> <li>Settlement</li> <li>Transportation</li> <li>Hydrography</li> <li>Boundaries</li> <li>Geodetic control</li> <li>Elevation</li> <li>Imaging</li> </ul>	<ul style="list-style-type: none"> <li>Security</li> <li>Demography</li> <li>Flooding areas</li> <li>Logistic</li> <li>Economic and social activities</li> <li>Pedology</li> <li>Natural resources</li> <li>Environment</li> </ul>

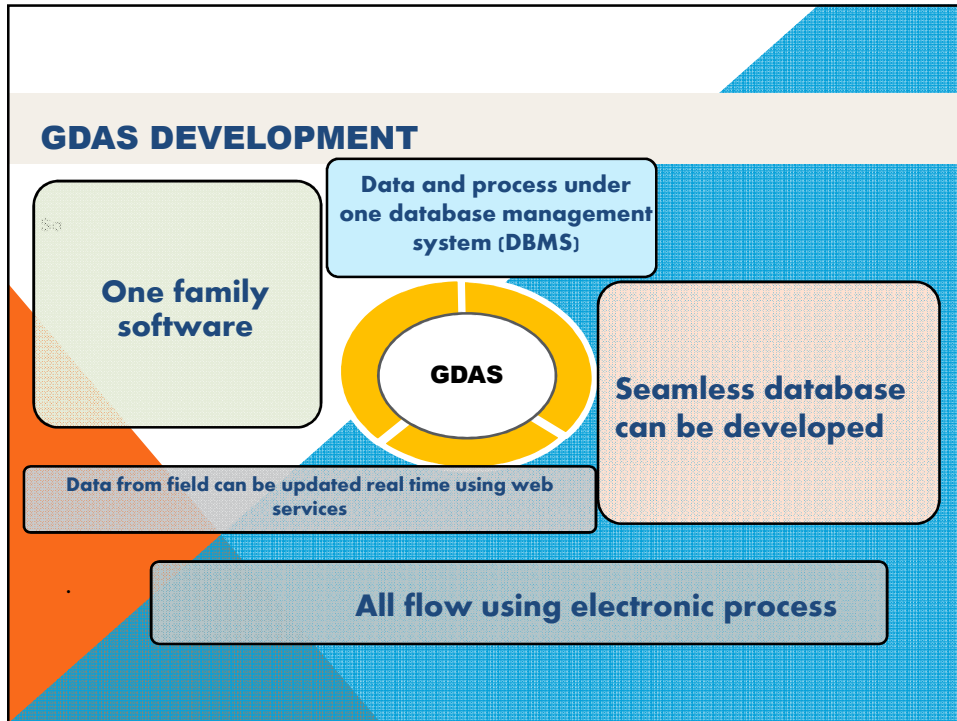


### GEOSPATIAL DATA ACQUISITION SYSTEM (GDAS)

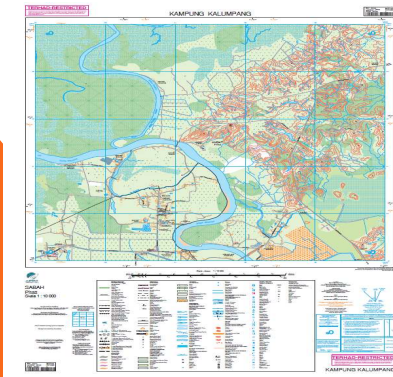
- Sub project under eMapping (10th Malaysia Plan)
- Divided into two phases :

**GDAS I**

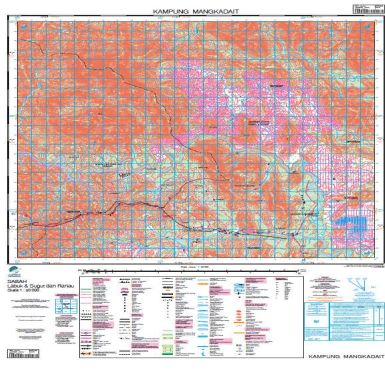
**GDAS II**



## GDAS PRODUCTS



**GO1323 - KG. KALUMPANG  
(1:10 000)**




**GJ13 - KG. MANGKADAIT  
(1:50 000)**









**GEOSPATIAL EMPOWERED  
TRANSFORMATION**



**Geospatial Data For Development of New Towns And Cities**



**High Demand For Geospatial Information**

<b>Defense and Intelligence</b> 	<b>Research and Education</b> 	<b>Sustainable Development</b> 	<b>Energy and Communications</b> 
<b>Risk and Disasters Management and Response</b> 	<b>Positioning and Navigation Services</b> 	<b>Natural Resources Management</b> 	<b>Electronic Government</b> 

© 2010 OGC

